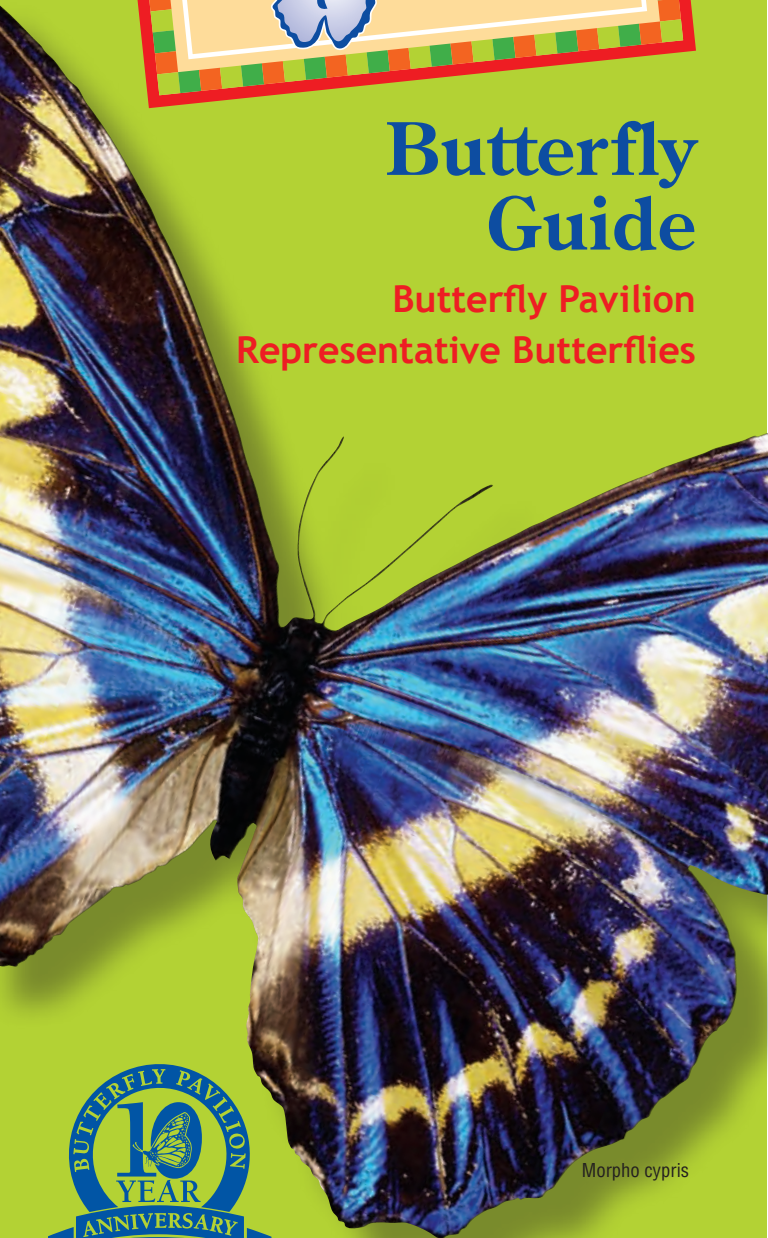




Butterfly PAVILION

Butterfly Guide

Butterfly Pavilion
Representative Butterflies



Morpho cypris



The Butterfly Pavilion & Insect Center
6252 West 104th Avenue
Westminster, Colorado 80020

Papilionidae

The swallowtails are the most ancient of butterflies. They can be told by the behavior of flitting from flower to flower.



◀ Ulysses or Blue Mountain Swallowtail

Papilio Ulysses
New Guinea to Australia

This species belongs to the gloss swallowtail group and is very closely related to the Green Peacock Swallowtail. This is a good example of convergent evolution in that the color and behavior of this species closely parallels the morphos of the New World. We get our specimens from Australia and because of the opposite seasons get them only in the winter months.



▲ Common Cattleheart

Parides iphidamas
Central to South America

Cattleheart caterpillars feed on the poisonous pipevine plants (*Aristolochia* sp.) and these toxins are incorporated into their hemolymph (blood). The butterflies therefore are unpalatable to birds. The common name comes from the bright red spots on the hindwing.

Common Green Birdwing ▶

Ornithoptera priamus
New Guinea to Australia

The largest butterfly we exhibit and one of the most beautiful. All birdwings are listed as endangered on CITES and cannot be collected from the wild. This species was one of the first birdwings to be bred in captivity and individuals are often released back to the wild to augment the natural populations. You can see these exquisite creatures in our conservatory only from October through May, Australia's summer months.



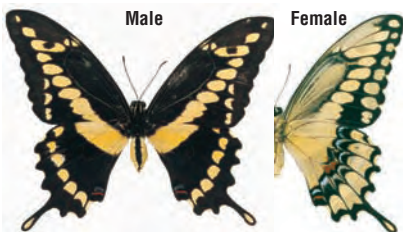
Papilionidae



Spicebush Swallowtail

Papilio Troilus United States

This butterfly gets its name from the food plant of its caterpillar. It is common east of the Great Plains.



Giant Swallowtail

Heraclides cresphontes

Southern U.S. to South America

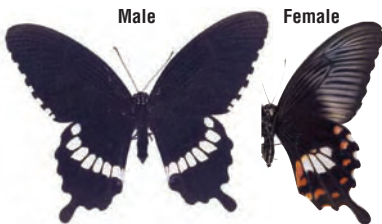
Caterpillars of this species, known as "orange dogs," are pests of citrus trees.



Tailed Jay

Graphium Agamemnon Asia

When nectaring at flowers, these butterflies keep their wings in constant motion, much like a hummingbird.



Common Mormon

Papilio polytes Malaysia & Philippines

This species is sexually dimorphic, meaning that males and females display different color patterns.



Torquatus Swallowtail

Heraclides torquatus

Central to South America

This is one of the smaller swallowtail species. It is often seen basking open-winged in the sun. The females mimic Cattlehearts.



Cupids Quilt

Heraclides erostratus Central America

The male of this species mimics the poisonous Pipevine Swallowtail, while the female of this species mimics the poisonous Red-Spotted Cattleheart.



Scarlet Mormon

Papilio rumanzovia Southeast Asia

Although it lacks tails, this is one of the largest and most brightly colored swallowtail butterflies at the Butterfly Pavilion.

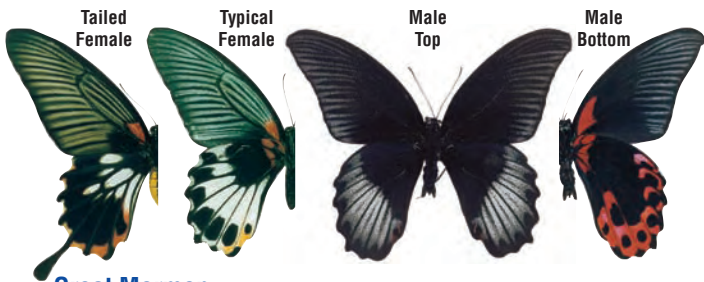


Green Banded Peacock

Papilio palinurus Southeast Asia

Camouflaged underneath, this butterfly displays bright green bands when it opens its wings.

Papilionidae



Great Mormon

Papilio memnon Southeast Asia

These butterflies are polymorphic, meaning they occur in many forms. Males and females differ in color patterns. Some females of this typically tailless swallowtail develop with a tail on each wing.



Checkered Swallowtail

Papilio demoleus Asia/Africa

This butterfly is a pest of citrus crops, as their caterpillars feed on leaves of oranges, limes and related plants.



African White Spotted Kite

Graphium colonna Africa

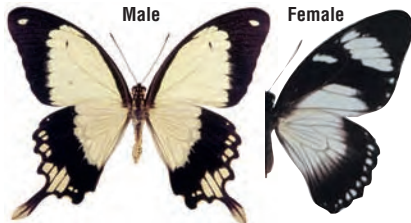
Related to the Tailed Jay of Asia. Caterpillars feed on plants in the custard apple family.



African Blue-banded Swallowtail

Papilio nireus Africa

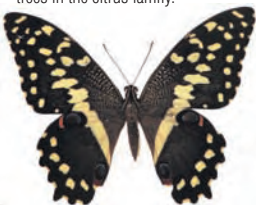
These papilionids are related to the Asian peacock swallowtails. Caterpillars feed on trees in the citrus family.



Mocker or Dardanus Swallowtail

Papilio dardanus Africa

The males of this citrus-feeder from Africa are a lovely cream color. Females may be similar in pattern or more often mimic various monarch relatives.



Orchard Swallowtail

Papilio demodocus Africa

This species looks like a larger version of the Checkered Lime Swallowtail but differs in the spot at the anal area of the hind wing, which is mostly blue instead of orange or red. It feeds on citrus and is common throughout Africa.



Pink-spotted Swallowtail

Heraclides anchisiades
Texas to Central America

This species is closely related to the Giant Swallowtail. The extreme color difference is due to the fact that this species mimics cattlehearts, which are bad tasting. Host plants are plants in the citrus family.

Pieridae

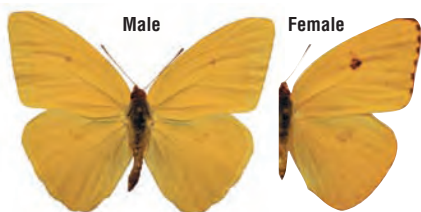
The sulphurs and whites are closely related to the swallowtails. It has been postulated that the word butterfly is derived from the yellow color of many of these insects.

Cloudless Sulphur ▶

Phoebis sennae

Eastern US to South America

This tropical pierid is common from New Jersey south to Florida in late summer. Caterpillars feed on Cassia and related plants in the pea family.



◀ Great Southern White

Ascia monuste

Southern United States

Females can be very different from the males in coloration. Common from South Carolina through Florida and the Caribbean along the coast where their host plant Cakile, or sea rocket, grows. Other host plants in the mustard family are utilized as well.

Giant Orangetip ▼

Hebomoia glaucippe

Asia

Common in southern Asia, this large cream or white pierid with orange tips to the forewing feeds on plants in the caper family. Orangetips love sunshine and are most active during hot parts of the day.



Danaidae

The milkweed butterflies are considered the most advanced of the butterflies by many scientists. These are medium to large insects with bold patterns on their wings which tell predators the animals are unpalatable.



◀ The Monarch

Danaus plexippus
North America to Central America

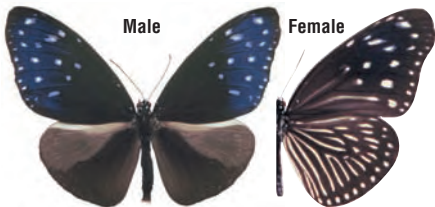
These are best known for their extensive migrations in the winter to California and central Mexico.



The Queen

Danaus gilippus
Southern U.S. to South America

Closely related to the monarch, caterpillars of this species also feed on milkweed leaves.



Spotted Blue Crow

Euploea mulciber Southern Asia

Crows are relatives of the monarch from Asia. They are predominately black in color, often with blue and purple reflections. They are used as models for mimicry. Caterpillars feed on Ficus.



Paper Kite

Idea leuconoe Asia

Also known as rice paper butterflies, this species has a slow, gentle flight behavior like paper floating in air. They are old world relatives to the monarch.



Plain Tiger

Danaus chrysippus
Africa to Australia

This butterfly is also known as the "lesser wanderer" or the "African monarch."

Blue Glassy Tiger

Danaus vulgaris Asia

Iridescence makes the spots appear white from some angles and blue when viewed from others.



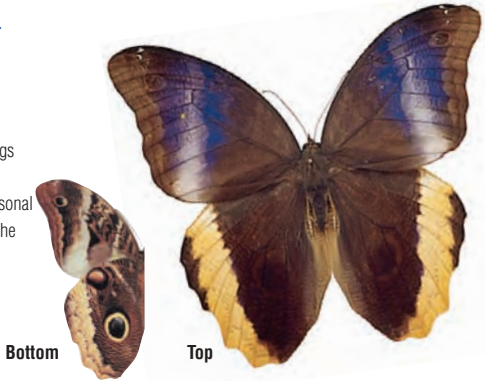
Brassolidae

The owl butterflies are closely related to the morphos but are easily distinguished by the one large eyespot on the underside. Like morphos, they are restricted to the New World and feed on overripe fruit.

Magnificent Owl ▶

Caligo atreus
Central America

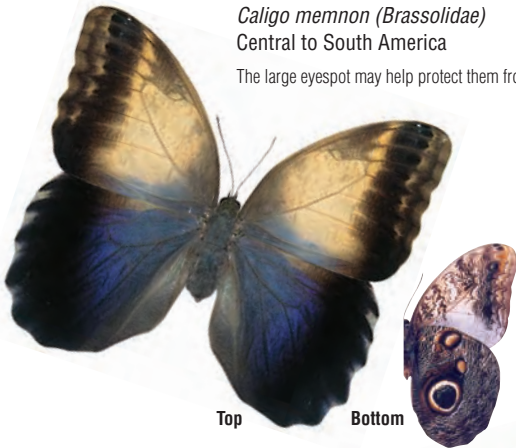
The upper side of the wing is a lovely purple, and the hind wings have an ochre band around the edge. This species is more seasonal and we import them mostly in the fall and winter.



▼ Tawny Owl Butterfly

Caligo memnon (Brassolidae)
Central to South America

The large eyespot may help protect them from predators.



Mournful Owl ▶

Caligo eurilochus
Central to South America

The largest species we exhibit. This species has dark gray fore wings which separates them from the Tawny Owl.



Saturniidae

Silk moths that are among the largest in North America. The larvae are insatiable leaf eaters but the adults generally lack developed mouthparts and do not feed during their lifespan.

▼ Atlas Moth

Attacus atlas
Southeast Asia

The large triangular patches in both wings are called windows and are actually translucent. These help to break up the shape of the animal. The front wings have elongated tips that mimic the head of a snake further protecting the species from predators.



Caesar's Atlas

Attacus Caesar
Philippines

One of two species of Atlas moths that we exhibit. Caesar's Atlas has greenish scaling on its very large wings. Atlas moths are the largest moths with some females reaching 12 inches in wingspan!

Heliconiidae



Tiger Longwing

Heliconius hecale

Central to South America

Look for these slow flying butterflies nectaring from flowers around the pond.



Top

Bottom

Gulf Fritillary

Agraulis vanillae

Southern U.S. to South America

Look for the shiny silver spots on the underside of their wings.



Blue & White Longwing

Heliconius cydno Central to South America

Another species of longwing with numerous color forms.



Blue & White Longwing

Heliconius cydno Central to South America

Though this form is black and cream colored instead of white, it is nevertheless the same species as illustrated to the left.



Common Postman

Heliconius erato

Central to South America

This is the Central American subspecies. The common name comes from the red patch on the fore wing.

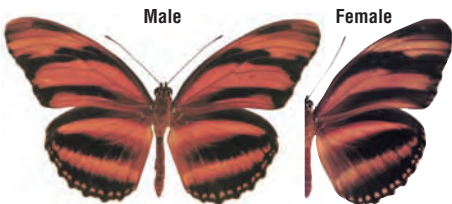


Common Postman

Heliconius erato

Central to South America

Yet another distinct subspecies. All Common Postman butterflies can interbreed which makes them very useful in genetic studies.



Male

Female

Banded Orange

Dryadula phaetusa Central to South America

A primitive species of longwing with more normal shaped wings. The banded pattern is distinctive.

Heliconiidae

The elongated wing shape distinguishes the longwing butterflies. All members are restricted to the New World tropics where the larvae feed on passion vines (*Passiflora* sp.)

▼ Julia, Fambeau

Dryas Julia

South Florida to South America

Their bright orange color makes these butterflies one of the more conspicuous in the Pavilion. Males are unmarked orange.



Zebra Longwing

Heliconius charitonius

Southern U.S. to South America

These butterflies can live several months due to their ability to digest pollen as well as nectar.

▼ Common Postman

Heliconius erato

Central to South America

South America has many forms of this butterfly, each very different from the next. Mountain ranges and other physical obstacles such as rivers separate the different subspecies.



False Zebra Longwing

Heliconius atthis

South America

This longwing has shorter wings than most. The pattern on the wings is the easiest way to separate this species from the Zebra.



Nymphalidae



Chloe's Cracker

Hamadryas chloe South America

This small cracker is commonly seen perched upside down on the palms and firebush in the conservatory. All crackers have the habit of perching this way.



Greater Egg Fly

Hypolimnias bolina Asia

Scales in the white areas reflect a purple iridescence when viewed from certain angles. Females lack the white spot on the hindwings.



Metallic Blue Wave

Myscelia cyaniris

Central to South America

These attractive fruit-feeding butterflies are hard to see when resting with the wings closed. The iridescent color is stronger in males.



Sailor

Neptis hylas Malaysia

The smallest species at the Pavilion; black and white above, orange and white below.

Ithomiidae

The glassywing butterflies are closely related to the milkweed butterflies and are restricted mostly to the neotropics. The family name comes from the tendency of many species to have transparent wings.

Common Tiger Glassywing

Tithorea harmonia

Central to South America

Glassywings can be identified from longwing butterflies by the width of the thorax, which is wider than the head.



Spotted Tiger Glassywing

Tithorea tarricina

Central to South America

This butterfly mimics the Tiger Longwing and can be identified by its smaller head.

Nymphalidae

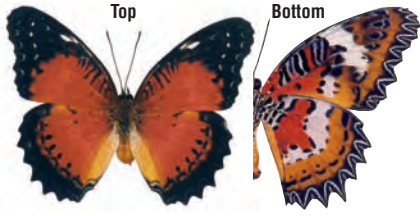


Blue-spotted Pansy

Precis oenone

Africa south of the Sahara

An aggressive butterfly that is fond of Lantana.



Common Lacewing

Cethosia bibles Asia

Lacy pattern on the underside gives this species its name.

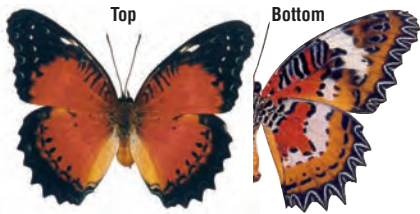


Brown Tip

Siproeta epaphus

Central to South America

A relative of the malachite. Distinguished by the rich orange brown tips to the fore wings.



Malay Lacewing

Cethosia hypsea Asia

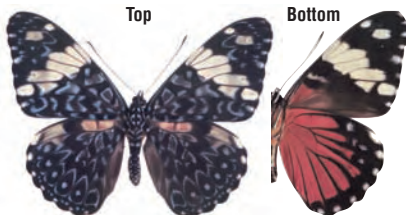
Lacy pattern on the underside gives this species its name.



Grey Pansy

Precis atlites Asia

Watch where you step! These butterflies camouflage well on our pathway.



Red Cracker

Hamadryas amphinome

Central and South America

Crackers are named for the crackling noise the males make while in aerial fights. The red underside of the wings distinguishes this species.

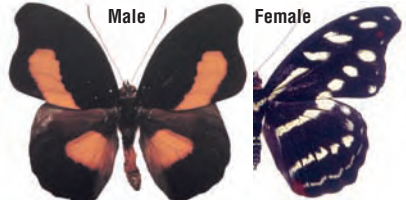


Red Rim

Biblis hyperia

Central to South America

This small nymphalid cannot be confused with any other butterfly. Often seen perched low on foliage or at the fruit trays.



Orange-banded Shoemaker

Catonephele orites South America

Males and females exhibit sexual dimorphism. Females are thought to mimic the distasteful Zebra Longwing. Shoemakers are understory fruit-feeders.

Nymphalidae

The brush-footed butterflies are a catchall family of butterflies characterized by having the first pair of legs shorter than the rest.



◀ White Peacock

Anartia jatrophae

Southern US to Central America

Appearing like old lace, this small relative of the Buckeye is extremely territorial and will chase off butterflies many times its size. This species will migrate from Florida up to the Carolinas during the fall only to be killed by the frosts. They re-establish their populations every year.

Red Peacock, Amatheia ▶

Anartia amathea

South America

This species replaces the White Peacock in South America. It has the same habits, preferring open fields and gaps in the rainforest. It is highly territorial and will defend its territory from butterflies many times its size. The larvae feed on plants in the acanthus family.



◀ Malachite

Siproeta stelenes

Florida to South America

Named for the lovely malachite color on the wings, Malachites feed on flowers and fruit and superficially resemble the Tailed Jay though they are not closely related.

Mainland



Philippines



▶ Clipper

Parthenos Sylvia

Asia

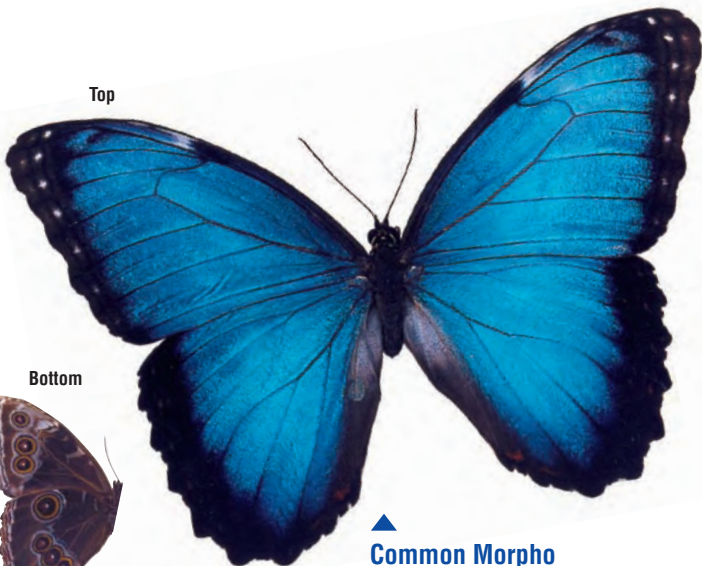
With wings spread open at rest, this aggressive species seems to pose for photographers.

The blue form is found on the mainland, and the brown form is from the Philippines.

Morphidae

The morpho butterflies are a small family of large, brightly-colored insects from the neotropics that feed on juices of overripe fruit. They have numerous eyespots on the underside of the wings.

Top



Bottom



Common Morpho

Morpho peleides (Morphidae)
Central to South America

Camouflaged when wings are closed; bright flash of blue when opened.

Achilles or Blue-banded Morpho

Morpho achilles
South America

This is a fast flying species. The caterpillars have tufts of hairs and feed on leguminous trees and shrubs.

